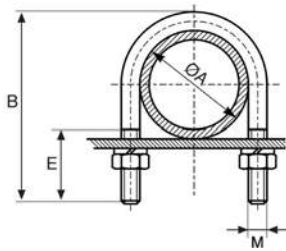


A 50 50



159

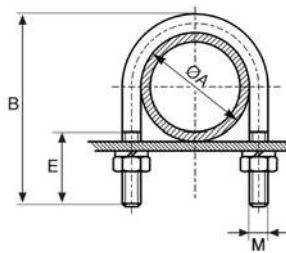
CAVALLOTTO PER FISSAGGIO TUBI

- U-BOLT CLAMP
- RUNDSTAHLBÜGEL
- ÉTRIER AVEC ECROUS
- ABARCON

MATERIAL: AISI 304 / W. 1.4301
NOTE: dado/back nut DIN 9344
 rondella/washer "grover"

CODE	DN inch	M	A mm	B mm	E mm		
159308304	3/8"	M 6	18	50	35	25	100
159102304	1/2"	M 6	22	53	35	27	100
159304304	3/4"	M 6	28	59	35	31	100
159100304	1"	M 6	34	65	35	34	100
159114304	1"1/4	M 6	43	74	35	39	100
159112304	1"1/2	M 8	49	85	40	80	100
159200304	2"	M 8	61	99	40	94	50
159212304	2"1/2	M 8	77	113	40	109	50
159300304	3"	M 8	90	126	40	122	50
159400304	4"	M 10	115	155	40	235	25
159500304	5"	M 10	144	184	40	281	25
159600304	6"	M 10	170	210	40	323	25
159800304	8"	M 10	221	259	40	401	25
1591000304	10"	M 10	275	313	40	487	25

A 50 50



159/M

CAVALLOTTO PER FISSAGGIO TUBI

- U-BOLT CLAMP
- RUNDSTAHLBÜGEL
- ÉTRIER AVEC ECROUS
- ABARCON

MATERIAL: AISI 304 / W. 1.4301
NOTE: dado/back nut DIN 934
 rondella/washer "grover"

CODE	D mm	M	A mm	B mm	E mm		
1590038304	38	M 6	39	70	35	37	100
1590054304	54	M 8	55	97	40	91	50
1590065304	65	M 8	66	99	40	95	50
1590070304	70	M 8	71	102	40	98	50
1590084304	84	M 8	85	117	40	113	50
1590104304	104	M 10	105	149	40	224	25
1590129304	129	M 10	130	170	40	259	25
1590154304	154	M 10	155	194	40	297	25
1590204304	204	M 10	206	244	40	377	25
1590254304	254	M 10	256	294	40	456	25
1590304304	304	M 10	306	344	50	536	25
1590354304	354	M 10	356	407	50	627	25