

Art. 5

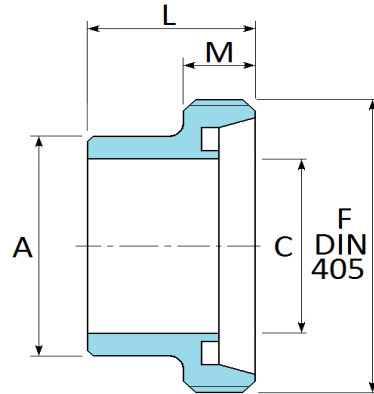
Raccordo femmina a saldare grosso

Welding male part thick

Piece filétée à soud. Epaisse

Anschw. Gewindestutzen dick

DIN 11851 :1989
DIN 1



DN	10	15	20	25	32	40	50	60	65	80	90	100	125	150
A*	18	24	30	35	41	48	61	69	79	93	103	114	137	162
C	9*	15*	19*	25*	31*	37*	49*	57*	66	81	84,9	97,6*	125	150
F	28x1/8"	34x1/8"	44x1/6"	52x1/6"	58x1/6"	65x1/6"	78x1/6"	85x1/6"	95x1/6"	110x1/4"	120x1/4"	130x1/4"	160x1/4"	190x1/4"
L	21	21	24	29	32	33	35	36	40	45	45	54	46	50
M	12	12	14	14	14	14	14	16	16	20	20	20	25	30
PN	40	40	40	40	40	40	25	25	25	25	25	25	16	16

* = fuori norma DIN -

Art. 6

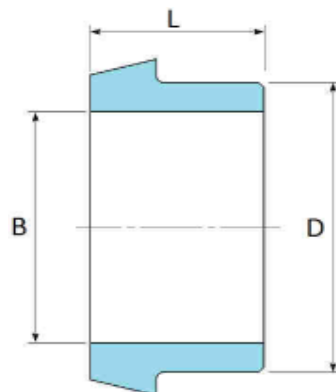
Raccordo maschio a saldare grosso

Welding liner thick

Piece lisse à soud. Epaisse

Anschw. Kegelstutzen dick

DIN 11851 :1989
DIN 1



DN	10	15	20	25	32	40	50	60	65	80	90	100	125	150
B	9*	15*	19*	25*	31*	37*	49*	57*	66	81	84,9	97,6*	125	150
D*	18	24	30	35	41	48	61	69	79	93	103	114	137	162
L	17	17	18	22	25	26	28	30	32	37	35	44	34	37
PN	40	40	40	40	40	40	25	25	25	25	25	25	16	16

* = fuori norma DIN -

Art. 10

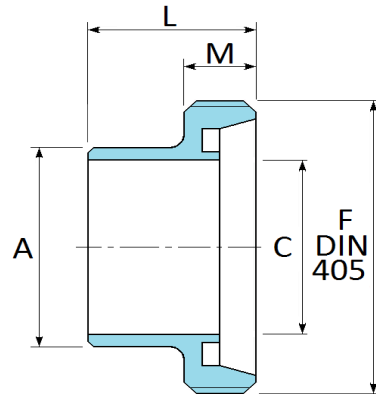
Raccordo femmina a saldare sottile

Welding male part thin

Piece filétée à soud. Fin

Anschw. Gewindestutzen dünn

DIN 11851 :1989
DIN 1



DN	10	15	20	25	32	40	50	60	65	80	100	125	150
A	15	21	25	31	37	43	55	63,5	72	87	106	132	157
C	10	16	20	26	32	38	50	57	66	81	100	125	150
F	28x1/8"	34x1/8"	44x1/6"	52x1/6"	58x1/6"	65x1/6"	78x1/6"	85x1/6"	95x1/6"	110x1/4"	130x1/4"	160x1/4"	190x1/4"
L	21	21	24	29	32	33	35	36	40	45	54	46	50
M	12	12	14	14	14	14	14	16	16	20	20	25	30
PN	40	40	40	40	40	40	25	25	25	25	25	16	16

Art. 11

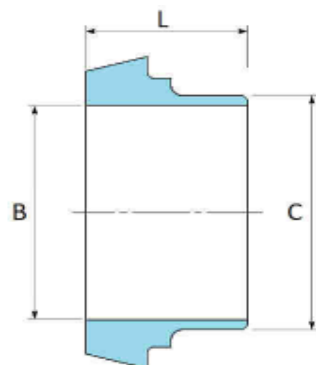
Raccordo maschio a saldare sottile

Welding liner thin

Piece lisse à soud. Fin

Anschw. Kegelstutzen dünn

DIN 11851 :1989
DIN 1



DN	10	15	20	25	32	40	50	60	65	80	100	125	150
B	10	16	20	26	32	38	50	57	66	81	100	125	150
C	15	21	25	31	37	43	55	63,5	72	87	106	132	157
L	17	17	18	22	25	26	28	30	32	37	44	34	37
PN	40	40	40	40	40	40	25	25	25	25	25	16	16