

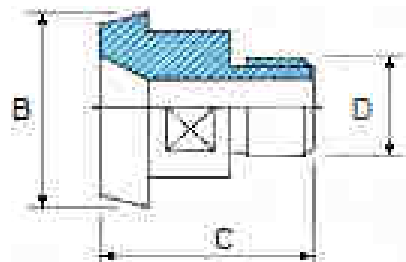
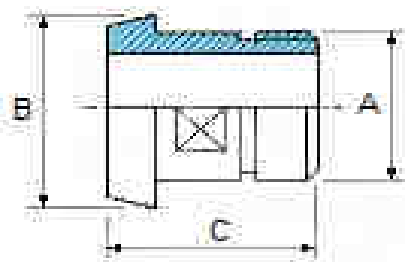
Art. 59

Raccordo maschio con tronchetto

Liner to BSP male

Douille fileté gaz

Kegeleinschraubstutzen



DN	10	15	20	25	32	40	50	65	80	100
A	3/8"	1/2"	3/4"	1"	1 1/4"	1 1/2"	2"	2 1/2"	3"	4"
D	1/4"	3/8"	1/2"	3/4"	1"	1"-1 1/4"	1"-1 1/2"	1"-2"	1"-2"	2"-3"
B	22	28	36	44	50	56	68	86	100	121
C	32	33	37	43	45	46	52	52	60	67

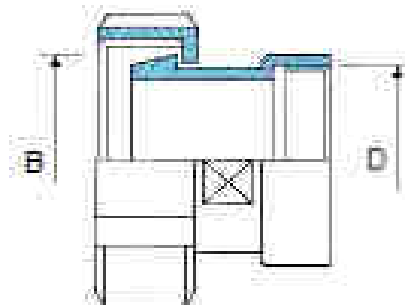
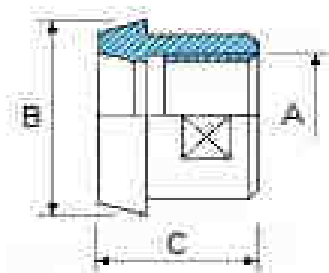
Art. 61

Raccordo maschio con foro gas

Liner to BSP female

Douille DIN taraudé gaz

Kegeleinschraubstutzen



DN	10	15	20	25	32	40	50	65	80	100
A	1/4"	3/8"	1/2"	3/4"	1"	1"-1 1/4"	1"-1 1/2"	1"-2"	1 1/2"-2 1/2"	2"-3"
D	3/8"	1/2"	3/4"	1"	1 1/4"	1 1/2"	2"	2 1/2"	3"	4"
B	22	28	36	44	50	56	68	86	100	121
C				22	25	26	28	32	37	44

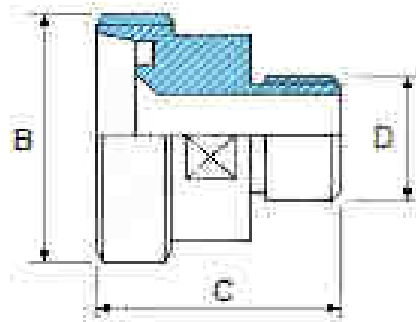
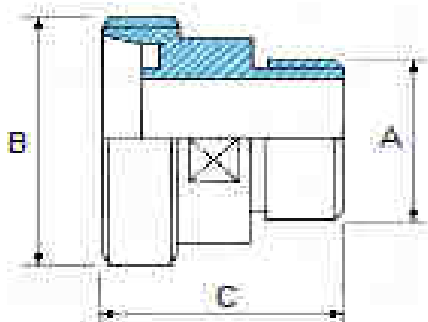
Art. 65

Raccordo femmina con tronchetto gas

DIN male to BSP male

Nez DIN filetée gaz

Gewindeeinschraubstutzen



DN	10	15	20	25	32	40	50	65	80	100
A	3/8"	1/2"	3/4"	1"	1 1/4"	1 1/2"	2"	2 1/2"	3"	4"
D	1/4"	3/8"	1/2"	3/4"	1"	1"-1 1/4"	1"-1 1/2"	1"-2"	1 1/2"-2 1/2"	2"-3"
B	28x1/8"	34x1/8"	44x1/6"	52x1/6"	58x1/6"	65x1/6"	78x1/6"	95x1/6"	110x1/4"	130x1/4"
C				45	48	50	52	54	65	74

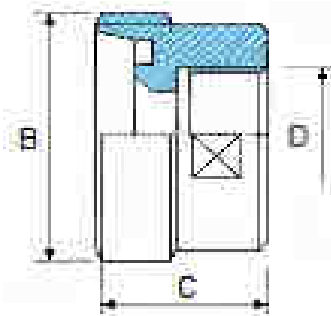
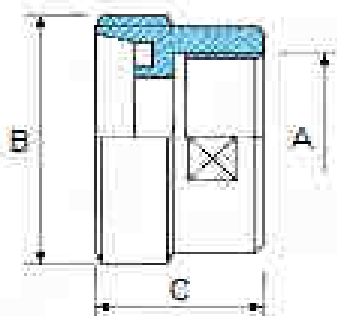
Art. 66

Raccordo femmina con foro gas

DIN male to BSP female

Nez DIN taraudé gaz

Gewindeaufschraubstutzen



DN	10	15	20	25	32	40	50	65	80	100
A	3/8"	1/2"	3/4"	1"	1 1/4"	1 1/2"	2"	2 1/2"	3"	4"
D	1/4"	3/8"	1/2"	3/4"	1"	1"-1 1/4"	1"-1 1/2"	1"-2"	1 1/2"-2 1/2"	2"-3"
B	28x1/8"	34x1/8"	44x1/6"	52x1/6"	58x1/6"	65x1/6"	78x1/6"	95x1/6"	110x1/4"	130x1/4"
C				30	34	36	38	40		