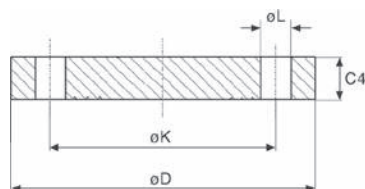


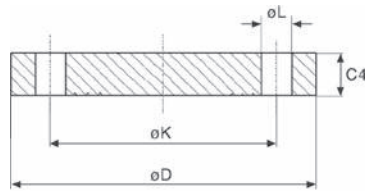
FLANGIA CIECA EN 1092-1 TIPO 05 A PN 6



Materiali= Acciaio al carbonio, acciaio INOX A304, Acciaio INOX A316

TUBO	FLANGE				FORI		kg
DN	D mm	C4 mm	K mm	L mm	N°	Thr.	
15 - 1/2"	80	12	55	11	4	M 10	0,80
20 - 3/4"	90	14	65	11	4	M 10	1,10
25 - 1"	100	14	75	11	4	M 10	1,40
32 - 1"1/4	120	14	90	14	4	M 12	2,00
40 - 1"1/2	130	14	100	14	4	M 12	2,40
50 - 2"	140	14	110	14	4	M 12	2,90
65 - 2"1/2	160	14	130	14	8	M 12	3,70
80 - 3"	190	16	150	18	8	M 16	4,60
100 - 4"	210	16	170	18	8	M 16	5,70
125 - 5"	240	18	200	18	8	M 16	8,10
150 - 6"	265	18	225	18	8	M 16	10,50
200 - 8"	320	20	280	18	12	M 16	16,50
250 - 10"	375	22	335	18	12	M 16	24,00
300 - 12"	440	22	395	22	12	M 20	31,00
350 - 14"	490	22	445	22	16	M 20	39,60
400 - 16"	540	22	495	22	16	M 20	49,60
450 - 18"	595	24	550	22	20	M 20	58,60
500 - 20"	645	24	600	22	20	M 20	75,30
500 - 20"	755	24	705	26	20	M 24	75,30
500 - 20"	860	24	810	25	20	M 22	75,30
500 - 20"	975	24	920	30	20	M 27	75,30

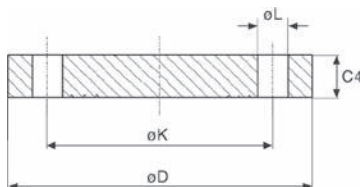
FLANGIA CIECA EN 1092-1 TIPO 05 A PN 10



Materiali= Acciaio al carbonio, acciaio INOX A304, Acciaio INOX A316

PN	TUBO DN	FLANGE				FORI		kg
		D mm	C4 mm	K mm	L mm	N°	Thr.	
PN10=16=25=40	15 - 1/2"	95	16	65	14	4	M 12	0,80
	20 - 3/4"	105	18	75	14	4	M 12	1,10
	25 - 1"	115	18	85	14	4	M 12	1,40
	32 - 1"1/4	140	18	100	18	4	M 16	2,00
	40 - 1"1/2	150	18	110	18	4	M 16	2,40
PN10=16	50 - 2"	165	18	125	18	4	M 16	2,90
	65 - 2"1/2	185	18	145	18	8	M 16	3,70
	80 - 3"	200	20	160	18	8	M 16	4,60
	100 - 4"	220	20	180	18	8	M 16	5,70
	125 - 5"	250	22	210	18	8	M 16	8,10
	150 - 6"	285	22	240	22	8	M 20	10,50
PN10	200 - 8"	340	24	295	22	12	M 20	16,50
	250 - 10"	395	26	350	22	12	M 20	24,00
	300 - 12"	445	26	400	22	12	M 20	31,00
	350 - 14"	505	26	460	22	16	M 20	39,60
	400 - 16"	565	26	515	26	16	M 24	49,60
	450 - 18"	615	28	565	26	20	M 24	58,60
	500 - 20"	670	28	620	26	20	M 24	75,30

FLANGIA CIECA EN 1092-1 TIPO 05 A PN 16



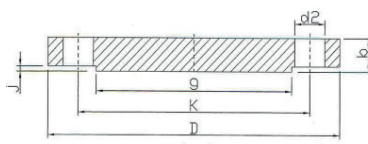
Materiali= Acciaio al carbonio, acciaio INOX A304, Acciaio INOX A316

PN	TUBO DN	FLANGE				FORI		kg
		D mm	C4 mm	K mm	L mm	N°	Thr.	
PN10=16=25=40	15 - 1/2"	95	16	65	14	4	M 12	0,80
	20 - 3/4"	105	18	75	14	4	M 12	1,10
	25 - 1"	115	18	85	14	4	M 12	1,40
	32 - 1"1/4	140	18	100	18	4	M 16	2,00
	40 - 1"1/2	150	18	110	18	4	M 16	2,40
PN10=16	50 - 2"	165	18	125	18	4	M 16	2,90
	65 - 2"1/2	185	18	145	18	8	M 16	3,70
	80 - 3"	200	20	160	18	8	M 16	4,60
	100 - 4"	220	20	180	18	8	M 16	5,70
	125 - 5"	250	22	210	18	8	M 16	8,10
	150 - 6"	285	22	240	22	8	M 20	10,50
PN16	200 - 8"	340	24	295	22	8	M 20	16,50
	250 - 10"	405	26	355	26	12	M 24	25,00
	300 - 12"	460	28	410	26	12	M 24	35,00
	350 - 14"	520	30	470	26	16	M 24	48,20
	400 - 16"	580	32	525	30	16	M 27	63,50
	450 - 18"	640	40	585	30	20	M 27	77,20
	500 - 20"	715	44	650	33	20	M 30	102,00

FLANGIA CIECA CON GRADINO

EN 1092-1 TIPO 05 B

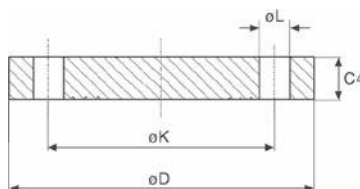
PN 16



Materiali= Acciaio al carbonio, acciaio INOX A304, Acciaio INOX A316

PN	TUBO	FLANGE				FORI		
		DN mm	B mm	K mm	D2 mm	N°	Thr.	kg
PN10=16=25=40	15 - 1/2"	95	16	65	14	4	M 12	0,73
	20 - 3/4"	105	18	75	14	4	M 12	1,05
	25 - 1"	115	18	85	14	4	M 12	1,28
	32 - 1"1/4	140	18	100	18	4	M 16	1,88
	40 - 1"1/2	150	18	110	18	4	M 16	2,09
PN10=16	50 - 2"	165	18	125	18	4	M 16	2,58
	65 - 2"1/2	185	18	145	18	8	M 16	3,31
	80 - 3"	200	20	160	18	8	M 16	4,26
	100 - 4"	220	20	180	18	8	M 16	5,24
	125 - 5"	250	22	210	18	8	M 16	7,64
	150 - 6"	285	22	240	22	8	M 20	9,86
PN16	200 - 8"	340	24	295	22	12	M 20	15,49
	250 - 10"	405	26	355	26	12	M 24	23,99
	300 - 12"	460	28	410	26	12	M 24	33,62
	400 - 16"	580	32	525	30	16	M 27	61,48
	500 - 20"	715	44	650	33	20	M 30	129,82

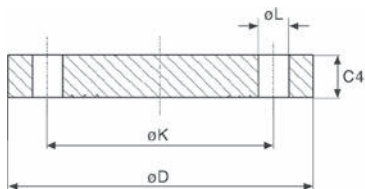
FLANGIA CIECA EN 1092-1 TIPO 05 A PN 25



Materiali= Acciaio al carbonio, acciaio INOX A304, Acciaio INOX A316

PN	TUBO DN	FLANGE				FORI		kg
		D mm	C4 mm	K mm	L mm	N°	Thr.	
PN10=16=25=40	15 - 1/2"	95	16	65	14	4	M 12	0,80
	20 - 3/4"	105	18	75	14	4	M 12	1,14
	25 - 1"	115	18	85	14	4	M 12	1,38
	32 - 1"1/4	140	18	100	18	4	M 16	2,03
	40 - 1"1/2	150	18	110	18	4	M 16	2,35
PN25=40	50 - 2"	165	20	125	18	4	M 16	3,20
	65 - 2"1/2	185	22	145	18	8	M 16	4,29
	80 - 3"	200	24	160	18	8	M 16	5,54
	100 - 4"	235	24	190	22	8	M 20	7,60
	125 - 5"	270	26	220	26	8	M 24	10,80
PN25	150 - 6"	300	28	250	26	8	M 24	14,60
	200 - 8"	360	30	310	26	12	M 24	22,50
	250 - 10"	425	32	370	30	12	M 27	33,50
	300 - 12"	485	34	430	30	16	M 27	46,30
	350 - 14"	555	38	490	33	16	M 30	68,10
	400 - 16"	620	40	550	36	16	M 33	89,70

FLANGIA CIECA EN 1092-1 TIPO 05 A PN 40



Materiali= Acciaio al carbonio, acciaio INOX A304, Acciaio INOX A316

PN	TUBO DN	FLANGE				FORI		kg
		D mm	C4 mm	K mm	L mm	N°	Thr.	
PN10=16=25=40	15 - 1/2"	95	16	65	14	4	M 12	0,80
	20 - 3/4"	105	18	75	14	4	M 12	1,14
	25 - 1"	115	18	85	14	4	M 12	1,38
	32 - 1"1/4"	140	18	100	18	4	M 16	2,03
	40 - 1"1/2"	150	18	110	18	4	M 16	2,35
PN25=40	50 - 2"	165	20	125	18	4	M 16	3,20
	65 - 2"1/2"	185	22	145	18	8	M 16	4,29
	80 - 3"	200	24	160	18	8	M 16	5,54
	100 - 4"	235	24	190	22	8	M 20	7,60
	125 - 5"	270	26	220	26	8	M 24	10,80
	150 - 6"	300	28	250	26	8	M 24	14,60
PN40	200 - 8"	375	36	320	30	12	M 27	28,80
	250 - 10"	450	38	385	33	12	M 30	44,40
	300 - 12"	515	42	450	33	16	M 30	64,20
	350 - 14"	580	46	510	36	16	M 33	89,50
	400 - 16"	660	50	585	39	16	M 36	127,00