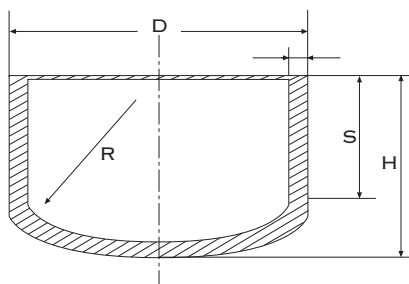


**CAPS**  
**ASME B 16.9 ASTM A 403**  
**CERTIFICATI: EN 10204/3.1B**



Ø est. mm x Spess. mm Outs. diam. mm x Thckn mm	Dimensioni Dimensions	Peso teorico Kg/pz. Theoric weight Kg/pcs.	h	r	s	Tipo Type
21.34 x 2.11	1/2" SCH 10S	0.050	25.4	14.0	18.8	A-403
21.34 x 2.77	1/2" SCH 40S	0.070	25.4	14.0	18.8	A-403
21.34 x 3.73	1/2" SCH 80S	0.080	25.4	14.0	18.8	A-403
26.67 x 2.11	3/4" SCH 10S	0.060	31.8	18.3	23.6	A-403
26.67 x 2.87	3/4" SCH 40S	0.080	31.8	18.3	23.6	A-403
26.67 x 3.91	3/4" SCH 80S	0.090	31.8	18.3	23.6	A-403
33.40 x 2.77	1" SCH 10S	0.075	38.1	23.4	27.9	A-403
33.40 x 3.38	1" SCH 40S	0.090	38.1	23.4	27.9	A-403
33.40 x 4.55	1" SCH 80S	0.110	38.1	23.4	27.9	A-403
42.16 x 2.77	1.1/4" SCH 10S	0.100	38.1	34.3	25.9	A-403
42.16 x 3.56	1.1/4" SCH 40S	0.130	38.1	34.3	25.9	A-403
42.16 x 4.85	1.1/4" SCH 80S	0.160	38.1	34.3	25.9	A-403
48.26 x 2.77	1.1/2" SCH 10S	0.130	38.1	35.8	24.1	A-403
48.26 x 3.68	1.1/2" SCH 40S	0.170	38.1	35.8	24.1	A-403
48.26 x 5.08	1.1/2" SCH 80S	0.220	38.1	35.8	24.1	A-403
60.33 x 2.77	2" SCH 10S	0.190	38.1	46.0	21.1	A-403
60.33 x 3.91	2" SCH 40S	0.260	38.1	46.0	21.1	A-403
60.33 x 5.54	2" SCH 80S	0.350	38.1	46.0	21.1	A-403
73.03 x 3.05	2.1/2" SCH 10S	0.240	38.1	54.6	17.3	A-403
73.03 x 5.16	2.1/2" SCH 40S	0.410	38.1	54.6	17.3	A-403
73.03 x 7.01	2.1/2" SCH 80S	0.510	38.1	54.6	17.3	A-403
88.90 x 3.05	3" SCH 10S	0.400	50.8	68.3	25.9	A-403
88.90 x 5.49	3" SCH 40S	0.680	50.8	68.3	25.9	A-403
88.90 x 7.62	3" SCH 80S	0.890	50.8	68.3	25.9	A-403
114.30 x 3.05	4" SCH 10S	0.570	63.5	89.4	32.0	A-403
114.30 x 6.02	4" SCH 40S	1.130	63.5	89.4	32.0	A-403
114.30 x 8.56	4" SCH 80S	1.510	63.5	89.4	32.0	A-403
141.30 x 3.40	5" SCH 10S	1.100	76.2	112.3	37.6	A-403
141.30 x 6.55	5" SCH 40S	2.120	76.2	112.3	37.6	A-403
168.28 x 3.40	6" SCH 10S	1.410	88.9	134.9	43.2	A-403
168.28 x 7.11	6" SCH 40S	2.950	88.9	134.9	43.2	A-403
168.28 x 10.97	6" SCH 80S	4.240	88.9	134.9	43.2	A-403
219.08 x 3.76	8" SCH 10S	2.470	101.6	177.3	42.7	A-403
219.08 x 8.18	8" SCH 40S	5.400	101.6	177.3	42.7	A-403
219.08 x 12.70	8" SCH 80S	7.800	101.6	177.3	42.7	A-403
273.05 x 4.19	10" SCH 10S	4.510	127.0	222.7	54.1	A-403
273.05 x 9.27	10" SCH 40S	10.000	127.0	222.7	54.1	A-403
273.05 x 12.70	10" SCH 80S	13.100	127.0	222.7	54.1	A-403
323.85 x 4.57	12" SCH 10S	6.670	152.4	266.7	66.5	A-403
323.85 x 9.53	12" SCH 40S	13.900	152.4	266.7	66.5	A-403
323.85 x 12.70	12" SCH 80S	17.300	152.4	266.7	66.5	A-403

**CARATTERISTICHE TECNICHE**

MARCATURA: marchio del produttore;  
 numero di colata, dimensioni, tipo di acciaio  
**CERTIFICATI EN 10204/3.1B**

**TECHNICAL INFORMATION**

MARKING: producer's name;  
 heat number, dimensions, steel  
**CERTIFICATES EN 10204/3.1B**

Nota: i dati tecnici riportati su questo catalogo sono indicativi e non impegnativi.  
 Note: the technical data reported in this catalogue are indicative and non binding.

Copyright © Intertubi S.p.a. Tutti i diritti sono riservati.  
 Copyright © Intertubi S.p.a. All rights reserved.