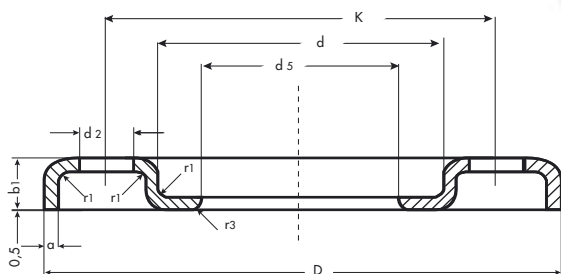


FLANGE STAMPATE LIBERE INOX

PRESSED LOOSE FLANGES



DN/ND	d ₁ (mm)	D	d	d ₅	K	r ₁	r ₃	B ₁	a	fori/holes n°	tipo type	d ₂	Kg ≈
15	21.3	95	38	25	65	3.0	3.0	11.5	3	4	M12	13.5	0.20
20	26.9	105	48	30	75	3.0	3.0	14.0	3	4	M12	13.5	0.24
25	33.7	115	53	38	85	3.0	3.0	16.0	3	4	M12	13.5	0.26
32	42.4	140	68	46	100	3.0	3.5	16.5	3	4	M16	17.5	0.45
40	48.3	150	77	54	110	3.0	3.5	18.0	4	4	M16	17.5	0.62
50	60.3	165	91	65	125	3.0	4.0	20.0	4	4	M16	17.5	0.80
65	76.1	185	108	81	145	4.5	5.0	22.0	5	4	M16	17.5	0.95
80	88.9	200	123	94	160	4.5	5.0	23.0	5	8	M16	17.5	1.40
100	114.3	220	141	119	180	5.0	5.0	24.0	6	8	M16	17.5	1.60
125	139.7	250	168	145	210	4.5	5.0	25.5	6	8	M16	17.5	2.00
150	168.3	285	192	173	240	4.5	5.0	27.0	6	8	M20	21.5	3.05
200	219.1	340	245	225	295	5.0	5.0	31.0	8	8	M20	21.5	3.65
250	273.0	395	295	276	350	5.0	5.0	34.0	8	12	M20	21.5	9.00
300	323.9	445	345	326	400	5.0	5.0	38.0	8	12	M20	21.5	11.0



CARATTERISTICHE TECNICHE

Certificate TÜV per impiego PN 10

(foratura adatta al collegamento con flange UNI 2278 e UNI 2282)

Acciaio: AISI 304

Norma dimensionale: UNI 6089 - DIN 2642

Finitura delle superfici: decapate e passivate

Marcatura: ad inchiostro riportante marchio

del fabbricante - DN - PN - acciaio - numero

di colata / lotto

CERTIFICATI: EN 10204/3.1B

TECHNICAL INFORMATION

TÜV certification for PN 10 use

(holes are suitable for UNI 2278 and UNI 2282)

Steel: AISI 304

Dimensional rules: UNI 6089 - DIN 2642

Surfaces finish:

Marking: ink, reporting producer's name

- ND - NP - steel - heat number / lot

CERTIFICATES: EN 10204/3.1B